

The HAWTHORNE
Club



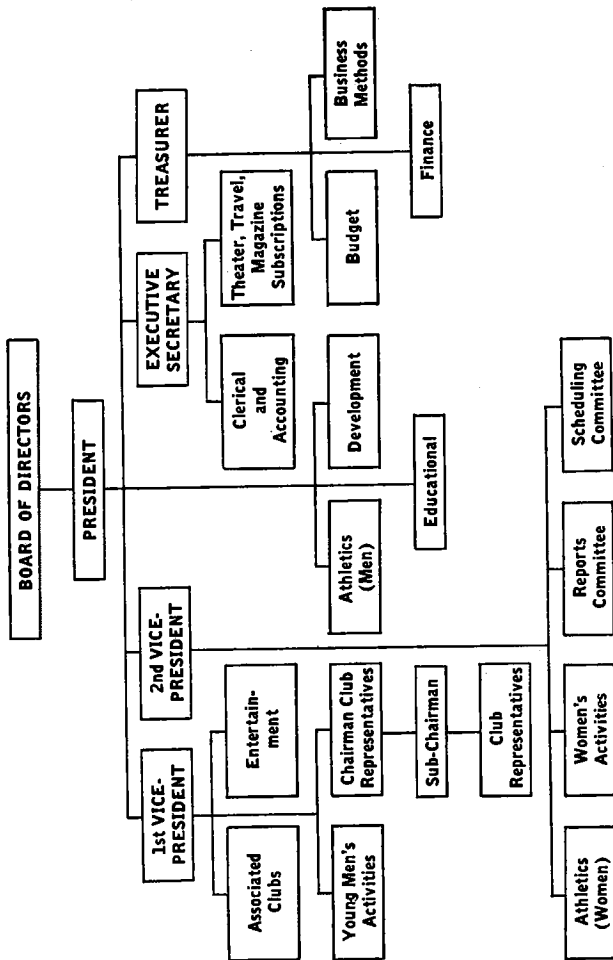
FOUNDED FOR FELLOWSHIP

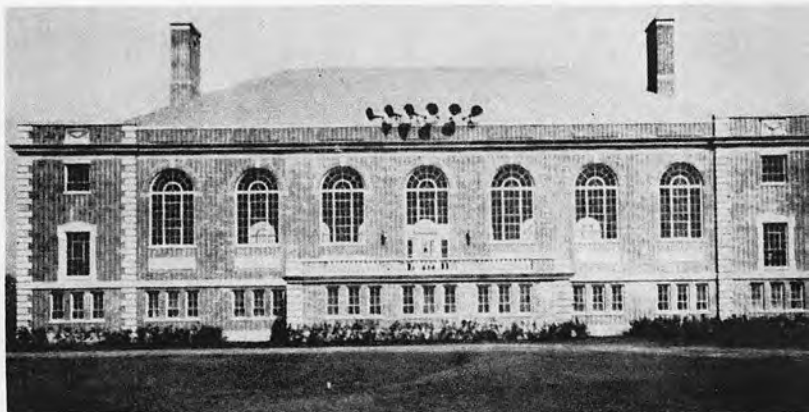
The
HAWTHORNE CLUB



**ITS PURPOSES,
POLICIES AND
ACTIVITIES**

Hawthorne Club Organization Chart





ALBRIGHT GYMNASIUM PROVIDES FACILITIES
FOR ALL HAWTHORNE CLUB MEMBERS

THIS booklet has been published as a guide and simple reference in order that you, as a member of the Hawthorne Club, may become familiar with its history and functions.

An endeavor has been made to include all of the interesting and important facts concerning the Club's activities and achievements.

Further information may be obtained from your Hawthorne Club representative or from the Hawthorne Club office, in Building 22-1.

THE HAWTHORNE CLUB

AS a means of supplying practical outlets for Hawthorne's spirit of friendliness and fraternalism a group of employees during the year 1911 visualized an organization to give tangible expression to good fellowship and to foster athletic and social activities.

Approached for their opinions, 600 men expressed a desire to become charter members of such an organization, and accordingly a meeting was called to formulate plans for a club. During the discussion, B. G. Harrison proposed that a club be organized "To promote acquaintance and fellowship among the men and to provide for entertainment, coupled with instruction." A constitution drawn by C. S. Merrick, W. Ruthven and J. J. Brown, Jr., was submitted to the group and unanimously accepted. The name se-

IN 1915 CLUB MEMBERSHIP WAS EXTENDED TO INCLUDE WOMEN



lected by the founders was "The Hawthorne Men's Club." When the last echoes of speech-making and campaigning had subsided, the results of the first election on October 30, 1911, gave the initial administration of the Club to T. R. George, as president; W. F. Hosford, vice-president; and



T. R. GEORGE. FIRST PRESIDENT

G. B. Hallett, secretary. This executive group then appointed social, educational and athletic committees.

The success of the Club in promoting men's activities was so outstanding that a special meeting was called on April 23, 1915, to consider extending the privilege of membership to all employees, both men and women. This change was authorized and the Hawthorne Men's Club became the Hawthorne Club.

GROWING upon the solid foundation set by the original founders of the organization in 1911, the Hawthorne Club now consists of a membership comprising all Hawthorne employees, officered by 15 directors, five executive officers, 25 sub-chairmen and 225 representatives. The Club conducts various associated clubs, an Evening School, a varied recreational program, and an office giving numerous special services—a total of some 30 activities, requiring nearly 900 people for their successful management. Of these, 140 are instructors in the Evening School. The majority of the others are members of various committees.

Officers and Members

CONTROL of the Club is vested in the Board of Directors, composed of 15 members selected by a nominating committee. The executive officers, also selected by a nominating committee, consist of a president (a man), first vice-president (a man), second vice-president (a woman), and a treasurer (a man). In addition, an

executive secretary appointed by the Board of Directors devotes his entire time to the work of the Club. The executive officers are responsible to the directors for the management of the Club's business. It is the duty of the Club president to appoint all committee chairmen, subject to approval by the directors.



TYPICAL MEETING OF CLUB OFFICERS

THE membership of the Club is divided into three classes—active, associate, and honorary. No dues are required. The active membership of the Club consists of all employees of the Hawthorne Works and other Chicago manufacturing locations of the Western Electric Company who have been in the continuous service of the Company for one year. The associate membership includes all employees with a continuous service record of two months, but less than one year; associate members are entitled to all privileges of the Club except those of voting and holding office.

All active and associate memberships cease when employees leave the service of the Western Electric Company. Honorary membership in the Club is granted to those who may be elected by a vote of the Board of Directors. Honorary members enjoy all privileges except voting and holding office.



CLUB MEMBERS AT A NOON-HOUR PROGRAM

Hawthorne Club Committees

Club Representative Committee

MEMBERS of this committee act as information agents between Club members and the executive staff. Sales of tickets for social events, distribution of theater tickets, and such philanthropic movements as Community Fund drives are all conducted through the Club representative committee and the Club representatives. The Club area is divided into 25 zones, each in charge of a sub-chairman, who reports to the Club representative committee. These sub-chairmen appoint the Club representatives.

Business Methods Committee

THIS committee originates and maintains instructions and prescribes standard procedures for the business practices of the Club. These instructions include methods of bookkeeping, compilation of reports, control of merchandise, cash, etc.

Budget Committee

THE Club uses the budget plan to control expenditures and to aggregate the expenses which the Company defrays, and those of activities which are considered self-supporting. The budget committee compiles budget data each year and submits a plan to the Club management for approval.

Development Committee

IT is the duty of this committee to originate and consider suggestions for the extension and improvement of Club activities, to study the practicability of all new ideas proposed for the Club from other sources and to report findings to the Board of Directors. This committee may also be delegated special duties by the Club president. Club members having suggestions which will aid this committee should send them to the executive secretary's office, Building 22-1.

Scheduling Committee

TO insure that all functions are properly planned and to prevent possible conflict of dates, all Club events are scheduled with this committee. The schedule board is kept in the executive secretary's office in Building 22-1.

Christmas Committee

EACH year during the holiday season a committee of the Hawthorne Club sponsors the erection of Christmas trees at suitable locations throughout the Works and cooperates with the entertainment committee in providing musical programs appropriate to the holiday season.





ANNUAL GIRLS' PARTY

Women's Committee

THIS committee is responsible for planning and directing the many athletic and social functions which the Club offers to women members. Practically all of the athletic features available to men may also be enjoyed by the women employed at Hawthorne. The excellent facilities of Albright Gymnasium and the tennis courts on Memorial Field are open to girl employees, and other special activities—such as bowling, golf and rifle practice—are planned throughout the year.

OF particular interest among the various social activities held for women members is a special "Girls' Party" arranged at least once a year for their entertainment. Hawthorne Club dances are scheduled from time to time and are exceedingly popular events.

HAWTHORNE CLUB ACTIVITIES

Club Evening School offers instruction in practical and leisure-time pursuits

THE Hawthorne Club Evening School was originated by Club members in 1913 as a unique venture in voluntary cooperative education. It has grown from a school which during its first year offered four subjects and attracted 483 enrollments, to one with a curriculum of over 60 subjects and from 8,000 to 10,000 enrollments in peak years. The School is administered by a full-time principal under the supervision of the Hawthorne Club Educational Committee. Its purpose is to provide instruction in practical and leisure-time subjects for which there is sufficient demand from Club members. At present the courses offered are di-

Metallurgy
Drafting
Electricity
Accounting
Blue Print Reading
Aviation
Telephony
Typing
Shorthand
English
Mathematics
Psychology
Radio
Shop Practice
Comptometry

vided into four major fields: (1) fundamental courses, (2) vocational courses, (3) telephony courses, and (4) leisure-time or personal interest courses. Some of the leisure-time classes are organized in cooperation with other Club units, such as the athletic committee or associated clubs. Club members who seek instruction in subjects not listed in the Evening School *Bulletin* should make known their interests in the Evening School office, Building 22-1.

THE School year consists of two semesters, starting in September and January, each running for 13 weeks. Most classes meet one night a week and begin shortly after regular quitting hours. A small enrollment fee is charged in most courses, and when texts are required, they are sold to students at cost. More detailed information regarding the School, with a description of the courses offered, appears in the Evening School *Bulletin*, distributed each semester just before the enrollment period.



OFFICE OF THE CLUB EVENING SCHOOL



DEMONSTRATION IN HOME NURSING CLASS

***First Aid is recommended course
for all Hawthorne Club members***

FIRST aid is one of the major courses offered in the Evening School. It is made available through the cooperation of the American Red Cross, the Western Electric Company, and the Club School. These three organizations are glad to sponsor it as a part of their contribution to the task of making American citizens safety-minded at all times and able to render first aid treatment in emergencies on the highways, at home, or in the community. This course is recommended to all Club members who have not had its equivalent elsewhere.

THERE is no enrollment fee or text charge for this course. A joint certificate is issued by the American Red Cross and the Company to all Club members who satisfactorily complete the standard or advanced course in first aid.



Health Appearance Personality

ANOTHER course offered free of charge to all women Club members consists of eight hours instruction in health, appearance and personality. The course is based on the idea that these three factors affect one another and that a study of any

one of them involves study of the others. A text prepared by the American Telephone and Telegraph Company is given to all who attend the classes. Six of the lessons are taught by a regular instructor, and the final two are taught by experts, one a doctor and the other an authority on personality and dress.

Hawthorne Club Library

THE Hawthorne Club library was established in 1940 under auspices of the Evening School in order to make library facilities readily available to all Hawthorne Club members. Located in the Evening School office, in Building 22-1, the library provides an exceedingly popular and convenient means for Hawthorneans to obtain books in the fiction, non-fiction, and technical fields.

At present the library is divided into four sections to meet varying tastes and needs:

(1) Part of the library collection constitutes a branch of the Chicago Public Library. The large number of books in this section includes both fiction and non-fiction.

(2) The Evening School Reference Library contains books which supplement the courses of study offered by the Evening School. Hawthorne Club members who are registered for courses in the school will find that this section provides valuable material for study and reference.

(3) The Associated Clubs' Library is a very popular unit of the Club library. A great many of the books in this section deal with hobbies and leisure-time pursuits of a practical nature, in line with the various activities of the associated clubs. (See Pages 26-37.)

(4) The Rental Library section contains current fiction and non-fiction books which are in great demand. The purpose of the rental unit is to make available those books that are difficult to obtain in a public library. The rental for books in this unit is two cents a day; no rental is charged for books in the other three sections of the Library.

Any member of the Hawthorne Club may withdraw books from the Library by making application to the librarian. Hours are 12 noon to 3:30 P.M.





SOFTBALL ON MEMORIAL FIELD

Athletic Activities

THROUGH the athletic committee the Club offers men and women members an opportunity to participate in sports and gymnasium activities. The committee provides for athletic

competition among co-workers, and also furnishes amusement and recreation for those who wish to participate in less strenuous exercises.

Memorial Field, dedicated to Western Electric veterans of World War I, is one block west of the Hawthorne Works. Here are facilities for tennis, baseball, playground ball, and for track and field meets. Albright gymnasium, within the field, provides adequate facilities for indoor sports and gymnasium classes. No charge is made for gymnasium services or for participation in the majority of athletic activities. In the few cases where it is neces-



GIRLS' SWIMMING CLASS

sary to charge a fee, special mention is made in the description of the activity.

Baseball and Basketball

THES E games are among the most popular at Hawthorne and are played on a branch competitive basis. The games are scheduled weekly, in season, for both men and women. A general request is made for players at the beginning of the season and from those reporting, teams are selected to represent the various branches. Uniforms and necessary equipment are furnished to the teams. When enough competitors are available, boxing, wrestling

and track events are held annually, preceded by elimination competition. Cups, trophies and merchandise certificates are awarded to the winners of the various matches.

Gymnasium

FACILITIES are provided for basketball, volley - ball and classes in calisthenics. All of these classes are conducted under the supervision of physical directors. Anyone may take advantage of the gymnasium facilities by reporting at the gymnasium and arranging for a physical examination. Lockers, towels, soap, etc., are furnished without charge.

BASKETBALL
IN ALBRIGHT
GYMNASIUM





TENNIS ON MEMORIAL FIELD

Tennis Courts

THERE are sixteen good tennis courts located on Memorial Field. To use them it is necessary to show your Western Electric entrance pass to the attendant at the west end of Albright Gymnasium. The courts are open at noon, evenings and all day Saturday and Sunday. Lockers and showers are available at the gymnasium. There is no charge for the use of these facilities.

In the early part of each year tennis instruction in some form is usually offered. Sometimes a tennis school is established, and in other years instruction is provided by tennis movies and demonstrated lectures.

During the year there are two competitive tennis leagues: The Men's Interbranch Tournament gives the average player an opportunity to compete with players of his own class in an organized league, and the Hawthorne Tennis Club usually enters a team in the Chicago Tennis Association, which provides competition for the better players. When there is enough interest, these activities are also conducted for women.

The feature tennis events of each year are the Hawthorne Championship Tournaments, which are held at the end of the season in September to decide the singles and doubles championships in both the men's and women's divisions. All tennis players at the Hawthorne Works and all Chicago manufacturing locations of the Company are eligible to compete.

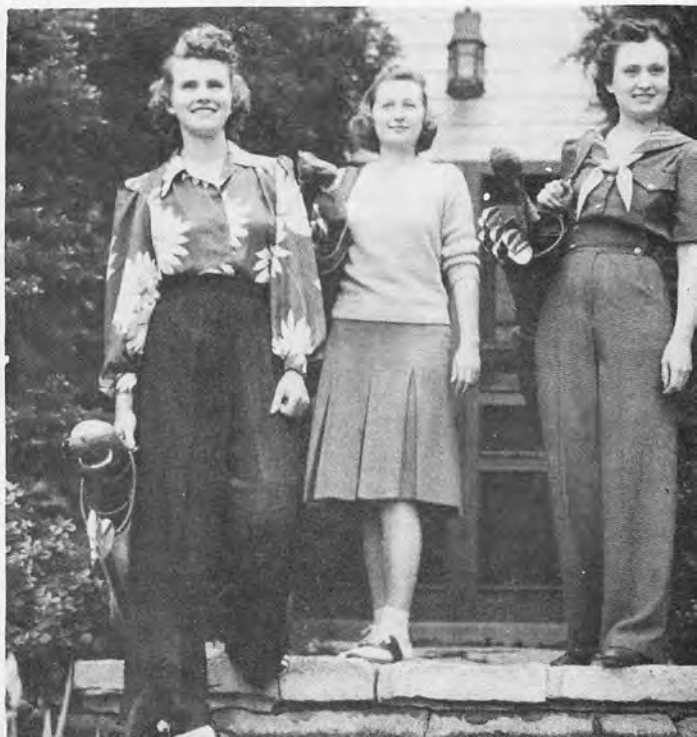
Golf for Men and Women

FOR the benefit of Hawthorne's men and women golf enthusiasts, the Club has obtained special concessions on several nearby, daily-fee courses. These privileges include reduced rates and the convenience of scheduling playing time in advance. Information regarding the golf program may be obtained from the

Club office in Building 22-1.

Each week prizes are awarded for low net scores and to winners of special events. The cost of these prizes is covered by a small membership fee.

Special announcements throughout the season are made in *The Microphone* and on the bulletin boards throughout the Works.



HAWTHORNE
GIRL
GOLFERS



Bowling for Men and Women

THE king of winter sports at Hawthorne attracts nearly 1,500 men bowlers, who participate in 25 leagues. The leagues are composed of groups varying from four teams to 36 teams. The feminine bowlers are well represented with a major league of 24 teams.

Twice each year a mixed doubles tournament is held, and usually more than 100 teams are formed.

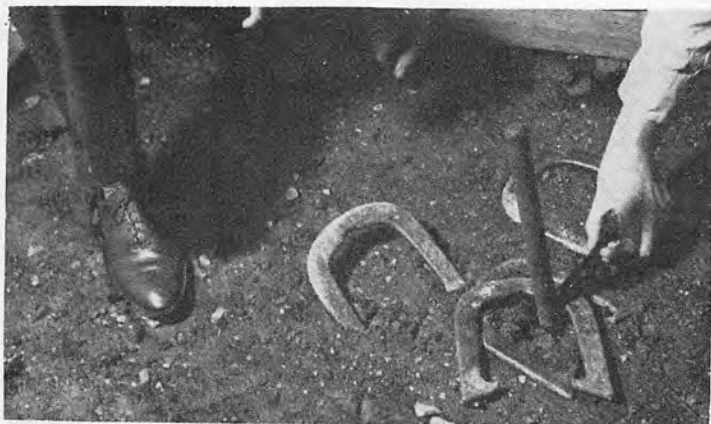
The Annual Hawthorne Club Tournament held in February attracts upwards of 1,000 bowlers, who compete in five-men events, doubles and singles.



Horseshoe Courts

COURTS are provided at convenient locations throughout the Works and are open to employees during noon hours and evenings without charge. A committee composed of members from each branch, one of whom handles reservations, is in charge of this sport.

Any employee desiring to play horseshoes should consult members of the committee or his Club representative to make arrangements for games.





DURING the winter season the rifle range, located on the grounds at Ogden Avenue, is the scene of many interesting matches in which both men and women take part. Guns are furnished by the club and ammunition is sold at cost. Beginners are welcomed and are given expert instruction.

The Hawthorne Rifle Club is affiliated with the National Rifle Association and has been very successful in national matches sponsored by that organization.

Rifle Club



Notary Service

THIS service is available at the Club office for automobile license applications and other types of papers requiring a notary public seal.

Young Men's Activities

THIS committee is composed of men who are experienced in arranging social and educational activities of interest to young men employees.

Each senior member of the committee has as his assistant a young man who is instructed in planning various activities. This practical experience, in addition to familiarizing him with Hawthorne Club work, prepares him for future service.

Some of the activities sponsored by the Young Men's Committee throughout the year are sports movie programs, pow-wows and banquets.

Classified Ads

TO enable employees to advertise articles "for sale" or "wanted" the Club conducts the Hawthorne Advertiser, using a page in *The Microphone*. Employees wishing to take advantage of this free service may obtain blanks from Club representatives.

Theater Bureau

A THEATER bureau is maintained in Building 22-1 to handle reservations and purchase tickets for the convenience of all employees with a minimum of delay. Because of the volume of business handled by the bureau, Club members have the advantage of securing choice seats, and in many cases, reduced rates.

Travel Bureau

AS an aid to employees who wish to travel during their vacations or over weekends, an efficient travel bureau is maintained in Building 22-1.

Programs and Entertainment

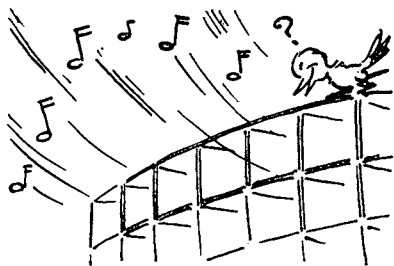


THE purpose of the Entertainment Committee is to provide recreation and diversion for Club members and to promote a get-together spirit.

The noon-hour programs during the summer months are a very popular form of relaxation and entertainment. Programs are varied and consist of outdoor danc-

es with fine orchestra music; commemorative programs, such as those on Memorial Day and Armistice Day; theatrical programs by professional talent; and talks by outstanding men and women from the government, stage, screen and sports.

THE Club engages professional talent several times a year to entertain disabled veterans and patients at nearby government and municipal hospitals. Other forms of entertainment are also sponsored by this committee, such as dances, skating and theater parties and an annual picnic.





POSTING THE COLORS DURING A NOON-HOUR PROGRAM



ASSOCIATED CLUBS

AS a means of providing outlets for the many Hawthorne Works employees who have interests or hobbies in common, a number of associated clubs have been formed. Through these groups Hawthorneans are able to meet and exchange their ideas and comments for the advancement of their education and for their own pleasure.

Each associated club elects its own officers, who report to the chairman of the associated clubs. Just as Hawthorne Club activities are open to all employees, the associated clubs constantly seek the interest and membership of all those who wish to follow special hobbies or activities.

The associated clubs described in the following pages include the Boot and Saddle Club, Camera Club, Chess and Checker Club, Coin Club, Excursion Club, Flower and Garden Club, Forum, Players Club, Hunting and Fishing Club, Male Chorus, Science Club and Stamp Club.





GROUP OF HAWTHORNE RIDERS

Boot and Saddle Club

ORIGINALLY organized in 1928 by a small departmental group, the Hawthorne Boot and Saddle Club in 1932 became affiliated with the Hawthorne associated clubs.

Weekly rides scheduled for every Tuesday evening

are held throughout the year. When inclement weather does not permit outdoor riding, formation rides to music in a large indoor arena are substituted.

Other activities of this club are dinner parties, breakfast rides, a sleigh ride, a steak fry, and several annual affairs such as the Fall Round-Up.

Camera Club

THE Camera Club was organized in 1915 to promote interest in amateur photography and to assist and encourage members in the improvement of their technique. Its programs are so arranged as to be of interest both to advanced workers and beginners. They include the chief divisions of photography, still pictures, slides, and moving pictures.

One annual salon provides an incentive for those who view photography as an art. Prints from these salons have been hung in international salons all over the world and have comprised exhibits which have traveled throughout the United States and foreign countries. Other annual events are the snapshot contest and the color slide contest.

A CLUB photographic school organized in 1938 now offers courses in all branches of photography to advanced students and beginners, covering movies, slides, and stills in both color and black and white.

Meetings are held twice monthly, one meeting for those interested in still photography, the other for those interested in movies and color photography. The Camera Club is affiliated with the Chicago Area Associated Camera Clubs and Amateur Cinema League.

SALON PRINTS BY CAMERA CLUB MEMBERS



Chess and Checker Club

THE Chess and Checker Club, one of the oldest of the associated clubs, was organized in 1913. It meets one night each week for play purposes and also sponsors an annual tournament for its members.

In addition to the local tournament several special events are held during the

year, such as a telegraphic chess match with the Bell Telephone Laboratories in New York City and competitive chess and checker matches with teams from other clubs.

All employees interested in playing or desiring to learn to play either chess or checkers, are invited to join.

Excursion Club

THE object of the Excursion Club, organized under the Women's Committee in 1931, is to enable members to see interesting places at reduced rates while enjoying the full benefit of the outdoors.

One outing a month is usually planned except during the months of July,

August and December. During the summer and fall, all-day outings are generally planned, and in the winter, places of interest in Chicago and vicinity are visited.

All Hawthorne Club members and their friends are welcome to the Excursion Club affairs.



Flower and Garden Club

THE Hawthorne Flower and Garden Club has been actively engaged in promoting general gardening and home landscaping ever since its affiliation with the Hawthorne associated clubs in 1929. Monthly educational meetings are arranged at which competent speakers provide members with practical horticultural information.

Public exhibition of garden products grown by members is encouraged by arranging a spring and fall show. These shows are often attended by thousands of persons and have become well-known events in the Chicago area.

Practically all of the garden requisites such as plants, bulbs, seeds, fertilizer, tools and other supplies are obtainable at favorable prices through pooled order facilities. The club also maintains a service whereby members may obtain expert information on particular gardening and cultural problems.

PICTORIAL records of outstanding garden achievements are made throughout the growing season. These pictures are usually shown at one or more of the educational meetings. The club's library contains many fine

CLUB DISPLAY AT FLOWER SHOW





CLUB MEMBERS STUDYING BLOOMS

books covering a wide variety of subjects as sources of information for the garden hobbyist. Various interesting bulletins are distributed during the year and are available to all Hawthorne Club members who leave their names and department numbers with any club officer or at the Hawthorne Club office.

The Forum

THE Hawthorne Club Forum was organized in 1937 and since then has grown to the point where there are now four units holding weekly meetings from October to April.

The object of the Forum is to make it possible for its members to train themselves to think and talk effectively before a group of people. To this end the weekly meetings are devoted to discussions of subjects of general interest. Monthly dinner meetings are held to promote sociability among members and to give them valuable experience in after-dinner speaking. Membership in the club is open to all Hawthorne Club members.



COACHING DURING A REHEARSAL

Players Club

THE Hawthorne Players Club, in existence since 1928, was organized as a means of providing Hawthorneans with an outlet for their dramatic abilities. The fact that the club has fulfilled its aim, both for the playing members of the cast and for the non-playing enthusiasts comprising the audiences, is indicated by the number of successful plays which have been presented since the club was founded.

Meetings at which all

phases of drama are discussed are held once each month during the active season of the club, from September to June. Members are instructed in the art of makeup, stage settings, lighting, poise, expression, diction, stage presence, and other details necessary for the successful presentation of a stage production. Major productions are held twice each year under the complete supervision of members of the club.

The Mixed Chorus

THE Mixed Chorus was organized in 1944 to provide members of the Hawthorne Club with the opportunity to join together in song for their own pleasure, and for the delight of others. It meets for rehearsals each Wednesday evening from 5:15 to 7:00 p.m. Membership is extended to all members of the Hawthorne Club, whether or not they read music.

The Mixed Chorus presents two special programs at Albright Gym each year, one in Spring and another just before Christmas. In addition, it presents special programs at veterans' hospitals, and sings carols throughout the plant on the day before Christmas.

The Flying Club

THE Flying Club, which was organized in 1945, provides its members with monthly programs designed to stimulate their interest in flying, and to give them additional knowledge of the subject. These programs on aeronautics usually include training films, and talks by experts. Membership is open to all members of the Hawthorne Club.

The Flying Club belongs to the Associated Flying Clubs of America, through whose facilities members obtain reduced rates for flight and training time at local airports.

The Coin Club

THE Coin Club was organized in 1941 to bring together collectors of coins, so that they could discuss their hobby with fellow collectors, conduct and participate in their own auctions, display their collections, and hear the leaders in the field speak on the subject of coins. Membership is open to all members of the Hawthorne Club. Meetings are held at the plant the first Thursday of each month from 5:15 to 8:00 p.m.



Hawthorne Hunting and Fishing Club

ONE of the largest and most popular clubs is the Hawthorne Hunting and Fishing Club, organized in September, 1936, to promote sportsmanship, safety, and education in the technique of hunting and fishing. Conservation has been given major consideration. The club fosters conservation of game and restoration of fish, prevention of useless destruction of wild life, a respect for the rights and property of others, and encourages appreciation of America's wild life resources.

The members of this club,

in addition to hunting and fishing, are interested in fly tying, bait and rod making, the breeding and training of dogs, bird life, and trap shooting. Programs are arranged during the year on subjects that include all the varied interests of the members. The club publishes a bulletin each month containing a wide variety of articles pertaining to hunting, fishing, conservation, and allied subjects, and to which all members are encouraged to contribute.

Trap shooting and casting tournaments are held during the year and trophies are given to the winners. The trap shooting and casting field is located at 39th Street and Cicero Avenue. The trap guns and fly rods used in the tournaments are also available to

the members for practice.

Certain committees are formed primarily with the intention of giving the members information and service in connection with the purchasing of equipment, obtaining data concerning desirable hunting and fishing locations and the laws governing these sports. The club also has a

library which contains books and pamphlets pertinent to a club of this nature—additions are being made from time to time.

The club sponsors the following special events in the course of the year: smelt run trip in April, annual picnic in August, and the Fall Round-Up—a dinner dance held in October.

CLUB MEMBERS RETURN FROM A DAY'S SUCCESSFUL SHOOTING





Hawthorne Male Chorus

THE Hawthorne Male Chorus was organized in 1923 to provide an opportunity for the enjoyment of musical activities, as well as to furnish entertainment to others. The membership now consists of 58 active members.

The Chorus has so increased in popularity that newspaper and radio critics of music give the organization a very high rating. For example, one writer has referred to it as "one of the leading industrial male choruses in the country."

IN addition to participating in programs sponsored by the Hawthorne Club, the Male Chorus is active in presenting programs for educational, religious and civic organizations, to assist them in raising funds for various worthwhile purposes. Rehearsals are held each Thursday from 5:15 p.m. to 6:40 p.m. in Studio Room 614, Building 27-6.

Science Club

IN 1924 a group of amateur radio fans organized the Radio Club for the purpose of furthering their hobby. By 1934 the interests of this group had so widened into other fields of scientific endeavor that the name of the organization was changed to the Hawthorne Science Club. The slogan, "Science Without Technicalities," was adopt-

ed at the same time and it has continued to be the byword of the club.

Regular monthly meetings are held from October to April. These meetings include lectures by outstanding scientific men, motion pictures of scientific interest, and demonstrations covering subjects of unusual or timely interest to club members.

Stamp Club

SINCE 1927, the year of its formation, the Hawthorne Stamp Club has been one of the most progressive philatelic organizations in the Chicago area. It was largely instrumental in the formation of the Central Federation of Stamp Clubs and in the establishment of National Philatelic Week.

The club's meetings feature talks by many philatelic celebrities of national reputation. Occasional meetings are devoted to

auctions or bourse sessions. The club also facilitates philatelic research through one of the most extensive philatelic libraries owned by any stamp club in the Chicago area.

A cordial invitation to participate in activities of the Stamp Club is extended to all Hawthorneans who have the faintest interest in postage stamps. Meetings are held the second Thursday of each month, except in July and August.

Officers of the Hawthorne Club

1946-47

	<i>Organ.</i>	<i>Phone</i>
<i>President</i>		
IRWIN P. LESETH	1333	3530
<i>1st Vice President</i>		
J. J. SPEVACEK	2321	3239
<i>2nd Vice President</i>		
CATHERINE O'CONNOR	2172	3572
<i>Treasurer</i>		
E. J. HOLT	7121	3055
<i>Executive Secretary</i>		
E. L. F. HEINRICH	965	3903

Past Presidents

T. R. George1911-12	J. B. Gibson1929-30
S. S. Holmes1912-14	T. H. Forster1930-31
J. W. Dietz1915-16	M. L. Putnam1931-32
H. G. Dean1916-17	L. S. Whitehead1932-33
C. W. Robbins1917-18	C. P. Beath1933-34
W. H. Meese1918-20	A. P. Lancaster1934-35
G. B. Hallett1920-21	H. E. DeCamp1935-36
J. J. Garvey1921-22	H. Rautenbusch1936-37
A. O. Avery1922-23	E. J. Skitt1937-38
E. E. Lofstrom1923-24	H. S. Brown1938-39
H. E. Mathisen1924-25	H. A. Edwards1939-41
W. P. Randall1925-26	J. J. Conners1941-42
W. A. Goethe1926-27	R. C. Brown1942-43
A. E. Holstedt1927-28	D. A. Moore1943-44
E. B. Torland1928-29	J. H. Sward1944-45
M. L. Ogden1945-46	

Index to Activities

Advertising in <i>The Microphone</i>	23
Albright Gymnasium	3, 16, 17
Associated Clubs	26
Athletics	16, 17
Baseball	17
Basketball	17
Board of Directors	6
Boat and Saddle Club	27
Bowling	20
<i>Bulletin</i> , Evening School	12
Calisthenics	17
Camera Club	28
Chess and Checker Club	29
Coin Club	26, 33
Committees, Hawthorne Club	
Budget Committee	8
Business Methods Committee	8
Club Representative Committee	8
Christmas Committee	9
Development Committee	9
Educational Committee	11
Entertainment Committee	24
Scheduling Committee	9
Women's Committee	10
Young Men's Committee	23
Evening School, Hawthorne Club	11-14
Excursion Club	29
First Aid Classes, Evening School	13
Flower and Garden Club	30
Forum	31
Golf	19
Girls' Party	10
Gymnasium Privileges	17
Health, Appearance, Personality Classes	14
History, Hawthorne Club	4-5
Hobby Clubs	33
Hobbies Exhibit	33
Honorary Members	7
Horseshoes	21
Hunting and Fishing Club	34-35
Library, Hawthorne Club	14-15
Library, Associated Clubs	15

Index to Activities (Cont'd)

Male Chorus	36
Membership Requirements, Hawthorne Club	7
Notary Public Service	23
Noon-Hour Programs	24
Officers, Hawthorne Club	6
Officers, List of	38
Organization Chart, Hawthorne Club	2
Players Club	32
Rifle Club	22
Science Club	37
Stamp Club	37
Tennis	18
Theater Bureau	23
Track and Field	16
Travel Bureau	23
Volley Ball	17
Wrestling	17

