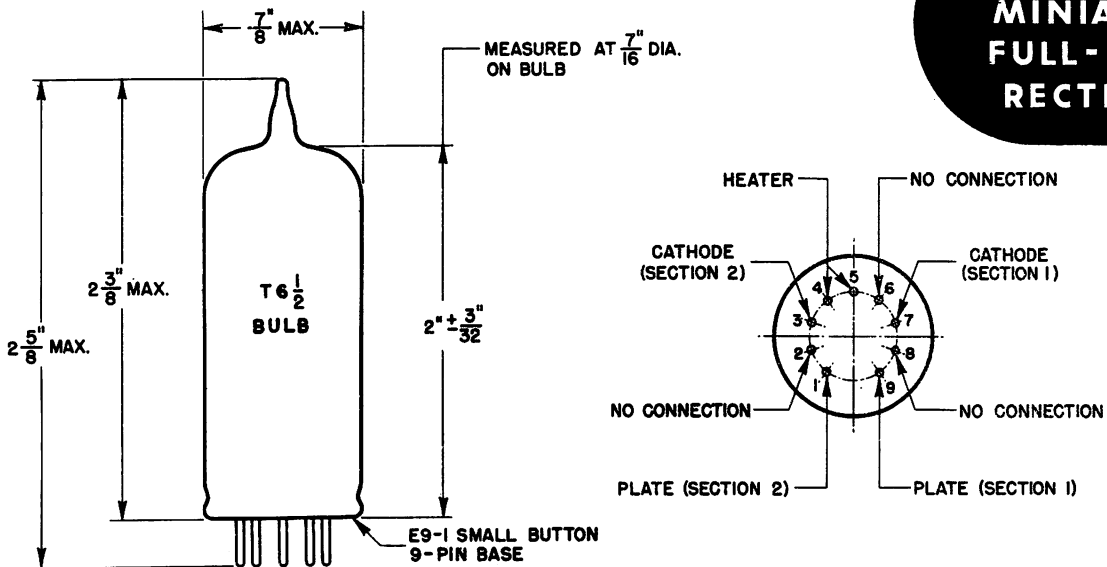


ADVANCE ELECTRON TUBE DATA SHEET

WESTERN ELECTRIC 412A ELECTRON TUBE

**412A**  
**MINIATURE**  
**FULL-WAVE**  
**RECTIFIER**



**DESCRIPTION**

Miniature Full-Wave Rectifier

**MOUNTING**

This tube may be mounted in any position

**MAXIMUM RATINGS (Design Center Values)**

Peak Inverse Voltage .....	1250 volts
Peak Plate Current per Plate .....	300 milliamperes
D-C Output Current .....	100 milliamperes
D-C Heater-Cathode Potential .....	450 volts

**GENERAL CHARACTERISTICS**

**ELECTRICAL DATA**

Heater Voltage .....	6.3 volts
Heater Current .....	1.0 ampere

**MECHANICAL DATA**

Cathode .....	Coated Unipotential
Bulb .....	T 6-1/2
Base .....	Small button 9-pin

**TYPICAL OPERATION WITH CONDENSER INPUT FILTER**

A-C Plate Voltage per Plate (RMS) .....	300 volts
D-C Output Current .....	90 milliamperes
D-C Output Voltage at Input Filter, Approximate .....	340 volts
Total Effective Plate Supply Impedance per Plate .....	150 ohms
Filter Input Condenser .....	4 microfarads